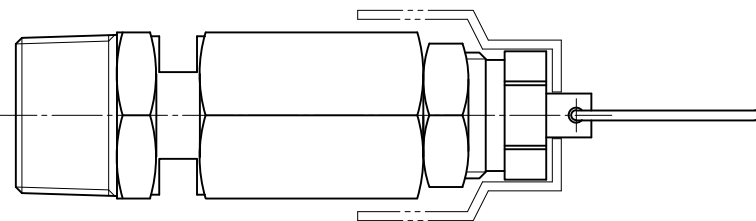
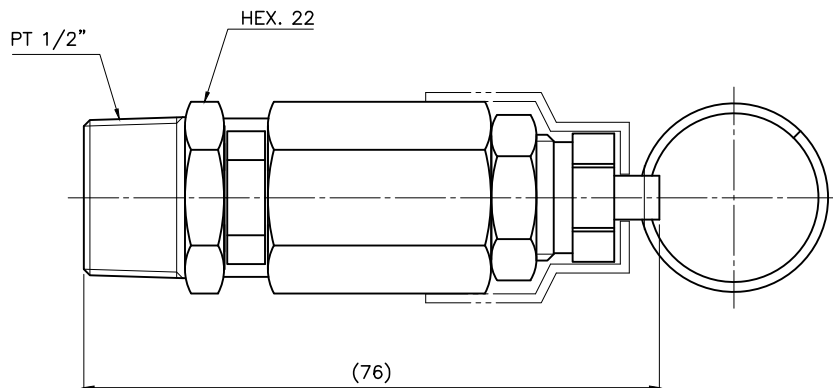


1 2 3 4 5 6 7 8

Σ305000933

ITEM	DESCRIPTION	MATERIAL	Q'TY	SIZE	PART DRAWN NO	WT(Kg)



NOTE

1. SET PRESSURE RANGE IS 0.5 MPa TO 1.5 MPa
2. RELIEF CAPACITY SEE TABLE
3. MATERIALS OF CONSTRUCTION
 BODY, DISK --- BRASS
 STEM, NUT --- STEEL
 PACKING --- VITON
4. MAX. TEMPERATURE 120°C

						NAME	SAFETY VALVE, PT1/2"				
						SCALE	2/3	NTS	DRAWN	DESIGN	CHECK
UNIT	mm	inch		L.H.G			L.H.G	DWG NO	PART NO	REV	SHT NO
DATE	2012. 5.24								T305000933	00	

SYM	REVISION	DATE	SIGN	CHECK	APPR	REFERENCE DRAWING